



✓ Š izbrani izdelek.



SONOFF PAMETNO STIKALO THR320D, SENZOR ZA TEMP. IN VLAŽNOST Z LCD ZASLONOM, ALEXA/GOOGLE HOME/IFTTT, 20A MAX.

ŠIFRA: SONSH-6920075777543

36.99€

THR320D SONOFF 6920075777543

DODATNE INFORMACIJE

Weight	0.2000 kg
Dimensions	4.3 × 10.8 × 10.8 cm
Garancija mesecih	12 mesecev
Proizvajalec	SONOFF



Zaloga: 10 na zalogi

Kategorije: [Dom in vrt](#), [Krmilniki in stikala](#), [Pametni dom](#)



OPIS IZDELKA

6-mesečni zgodovinski podatki o temperaturi in vlažnosti po urah



Podpora za preverjanje zgodovinskih podatkov o temperaturi in vlažnosti po urah, dnevih in mesecih.
Vaš izbrani izdelek.
Podatke o zadnjih 6 mesecih zgodovine je mogoče izvoziti v formatu .xlsx in natančno na uro.

Lokalni samodejni nadzor

Podpira nadzor LAN, naprava se lahko samodejno vklopi/izklopi glede na pragove temperature in vlažnosti v različnih časovnih obdobjih. Nastavite lahko 8 samodejnih krmilnih programov, da prihranite pri računu za elektriko.

Glavni nadzor

Združljivo z Alexa, Google Assistant. Omogoča možnost vklopa/izklopa in preverjanje temperature in vlažnosti.

Smart Scenes/Pametni scenarij

TH Origin lahko sproži druge pametne naprave, ko temperatura in vlažnost dosežeta prag ali ko se naprava vklopi ali izklopi. Vklop, izklop in invertiranje naprave lahko tudi izvede dejanje.

Opomba: Izdelek ne vsebuje senzorja za merjenje temperature ali vlažnosti. Za delovanje naprave potrebujete nakup originalnega senzorja, izbirate lahko med:

THS01 - Senzor za temperaturo in vlažnost

DS18B20-RJ9 - Voodporni senzor za temperaturo

RL560 - podaljšek za pametni senzor RJ11

MS01-RJ9 - Senzor za nadzor vlažnosti zemlje

Opomba : Če že imate 2,5 mm senzor audio jack (Si7021/AM2301/DS18B20) in ga želite uporabiti z novim TH Origin, morate uporabiti adapter RJ9 4P4C - AL010

(<https://b2b.elkotex.si/sonsh-6920075778076.html>)

- Oddaljen vklop/izklop-vaše priključene naprave vklopite in izklopite s telefonom od koderkoli na daljavo preko aplikacije eWeLink
- Podprto z aplikacijo -brezplačna iOS in Android aplikacija eWeLink
- LAN upravljanje -upravljajte z napravami preko lokalnega omrežja tudi ko nimate internega dostopa
- Sinhronizacijski status- ažuren prikaz statusa vaših naprav preko aplikacije
- Časovnik-nastavite urnik ali odštevalni časovnik za vklop ali izklop vaših naprav
- Delitev nadzora- nadzor nad napravami lahko delite z družinskimi člani
- Pametne scene-vaše naprave povežite z drugimi napravami in prednastavite kako naj naprave reagirajo ob izpolnitvi različnih pogojev (temperatura, vlaga, ostali senzorji)
- Glasovni nadzor - deluje z Amazon Alexa, Google Home Assistant, IFTTT



Spletna stran proizvajalca: <https://sonoff.tech/product/diy-smart-switch/th-origin/>
Vaš izbrani izdelek.

Tip produkta	Wi-Fi pametno stikalo
Napajanje	AC 100-240V
MCU (mikrokontroler)	ESP32
Število priključkov	Enojni
Tip kontakta	Mokri kontakt
Maksimalna obremenitev	100-240V~ 50/60Hz 20A Max
Brezžična povezljivost	Wi-Fi IEEE 802.11 b/g/n 2.4GHz
RF 433MHz	Ne
Deluje z	Amazon Alexa, Google Assistant, Yandex Alice, IFTTT
DIY način	Ne
Izjava o skladnosti	CE, FCC
Delovna temperatura	-10°C~40°C
Delovna vlažnost	10% - 90% RV (relativna vlažnost brez kondenzacije)
Material ohišja	PC V0
Proizvajalec	SONOFF



SONOFF TH Elite

Upgrade Retrofit Solution for Smart Temperature and Humidity Control

Within 10 minutes, turns your traditional thermostat into smart, automates your irrigation system, and gives you an easy way to monitor the temperature and humidity.

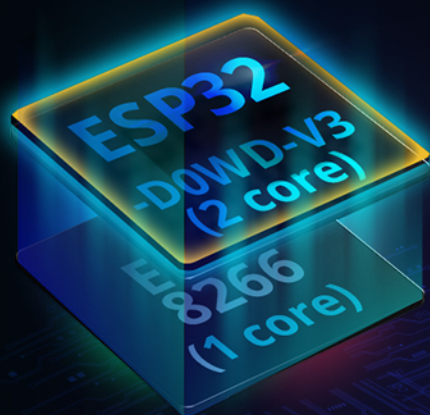




Vaš izbrani izdelek.



New Upgrade TH Series



Overall Performance



+200%

CPU Clock Speed



+50%

ROM



+300%

+4

Structure
Optimization

+6

Hardware Performance
Improvement

+10

Firmware
Improvement



Local Auto Mode

20A & Dry Contact Output

6-month History Data

Web Control

LAN Control

Voice Control

Real Time Temp & Humi Monitoring



You Safety, Our Responsibility

CE

FC

TUV

RoHS

SRRC



Own Factory, Strict Control Quality

Strictly selects UL safety components and RoHS environmental protection materials to design the products.

V0 Class Flame-Retardant Shell

The high-grade flame-retardant shell material is used.

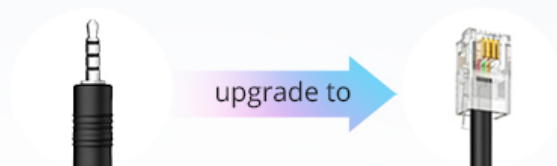


Varistor, Absorb Peak Voltage

Cut off high voltage generated by a lightning strike or unstable power supply when thundering.

Different Sensors for Different Scenes

The sensor connector is upgraded to RJ9 4P4C, supporting hot plugging making the connection more stable and reliable.



Temp & Humi Sensor

Monitoring environment temperature and humidity to take good care of baby.



Waterproof Temp Sensor

Monitoring the water temperature to take good care of goldfish.



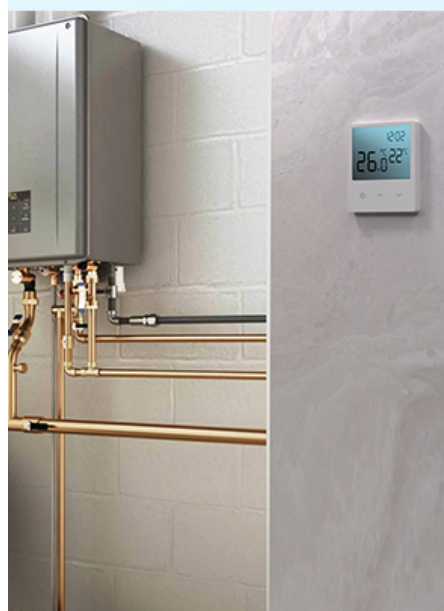
Soil Moisture Sensor

Monitoring the soil moisture to take good care of plant growth.

More Compatible

20A Max

Support to connect high load equipment like electric floor heating.



Dry Contact (volt-free contact)

Dry contact output acts as a "switch", controlling the on/off state of the circuit only but not powering it. Replace your dry contact outputted traditional thermostat with TH, to control the combi boiler or any other systems controlled by the ordinary switch.

*The output state of normally open dry contact is consistent with power relay, are not available to be controlled separately now.

More Compatible

20A Max

Support to connect high load equipment like electric floor heating.



Dry Contact (volt-free contact)

Dry contact output acts as a "switch", controlling the on/off state of the circuit only but not powering it. Replace your dry contact outputted traditional thermostat with TH, to control the combi boiler or any other systems controlled by the ordinary switch.

*The output state of normally open dry contact is consistent with power relay, are not available to be controlled separately now.

Reliable Temp & Humi Control

TH supports LAN control, Wi-Fi disconnected will not affect the operation of your device.



Manual Control

Turn on/off the device on the App anywhere, anytime.



Auto Mode

The device can turn on/off automatically according to the temp & humi thresholds at different time periods. 8 automatic control programs for you to save electricity bills and create comfortable surroundings.

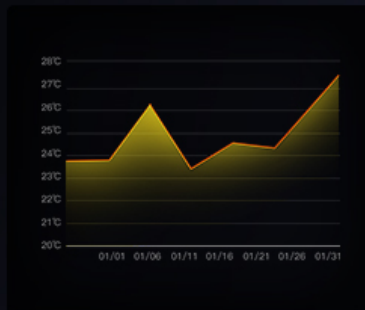


6-month Temp & Humi History Data

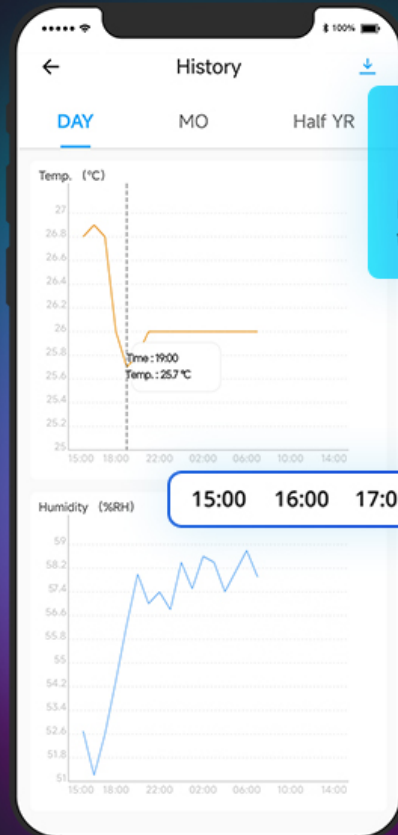
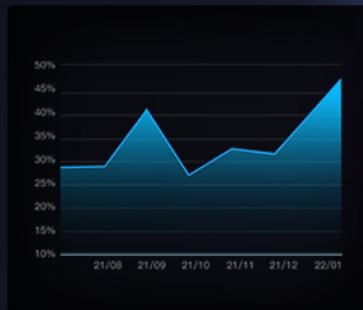
Support to review the temp & humi history data by hour, day and month.

Past 6-month history data can be exported in .xlsx format and accurate to hour.

Month



Half Year



Download the data

15:00 16:00 17:00 18:00 19:00
Hour

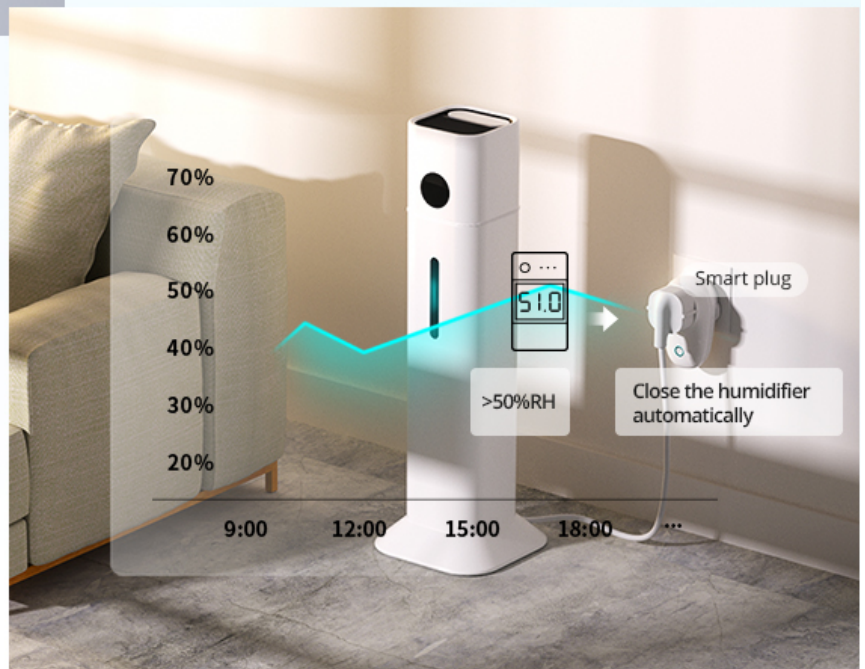


Timely Notifications

TH keeps monitoring the temperature and humidity in real time, once they reach your preset threshold or the device's on/off state changes, you will receive the Push notification on the phone.

Scene Automation

Use with other smart devices to achieve automation.





eWeLink Web Control

More convenient to view and control multiple devices on web page.



Support IFTTT

Support to add to IFTTT to achieve automation with other brands' devices.

*Above functions are only available to eWeLink VIP.

Add to Home Assistant

Add SONOFF devices to Home Assistant for control and automation through eWeLink add-on.



Voice Control

works with alexa

works with Hey Google



*Supported features, the voice platform shall prevail.



Vaš izbrani izdelek.

Wide Application Scenes



More Features



Schedule



Timer



Loop Timer



Inching



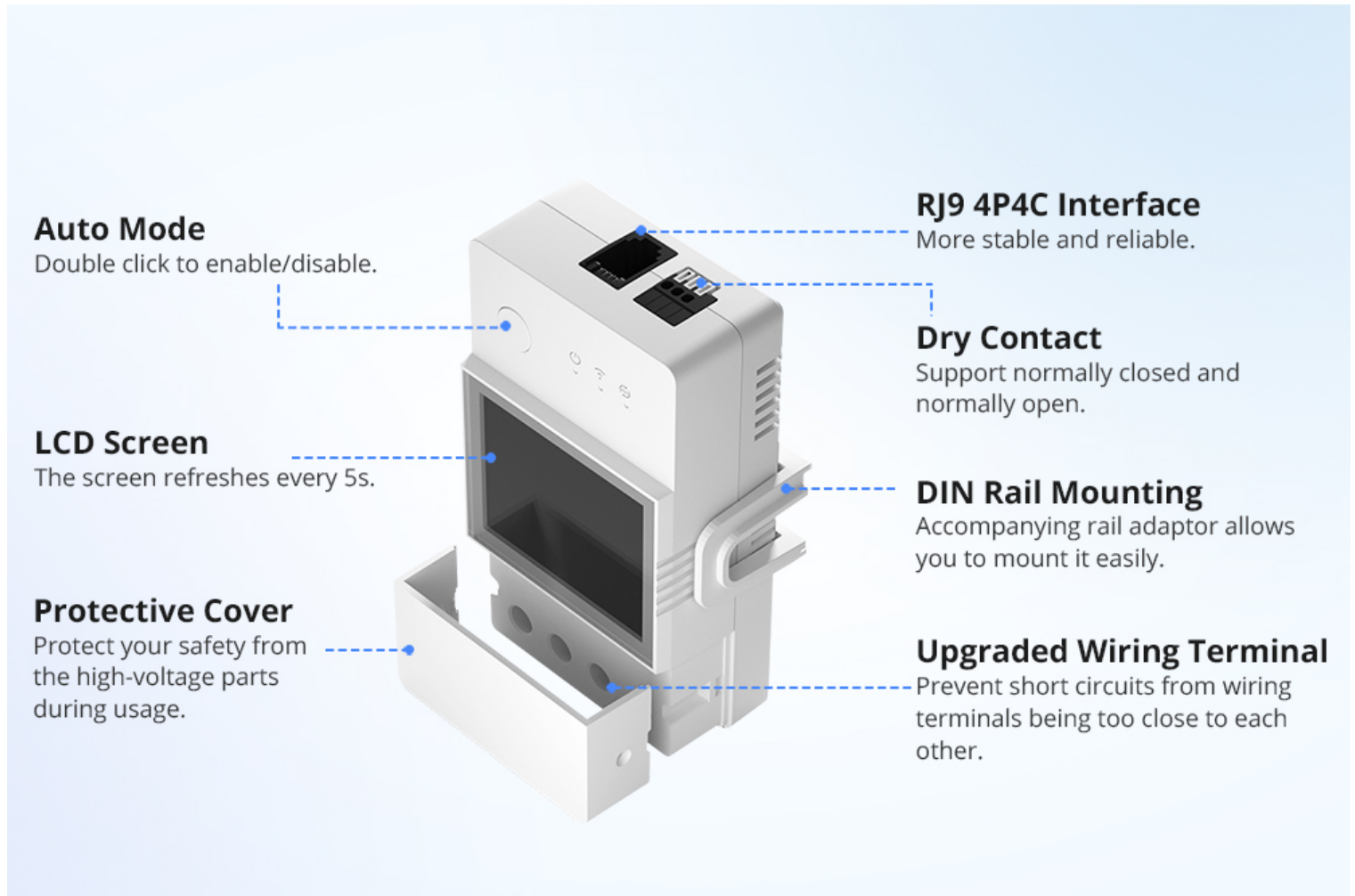
Power-on State



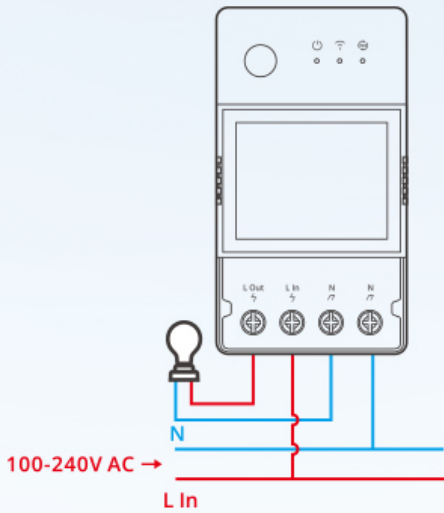
Share Control



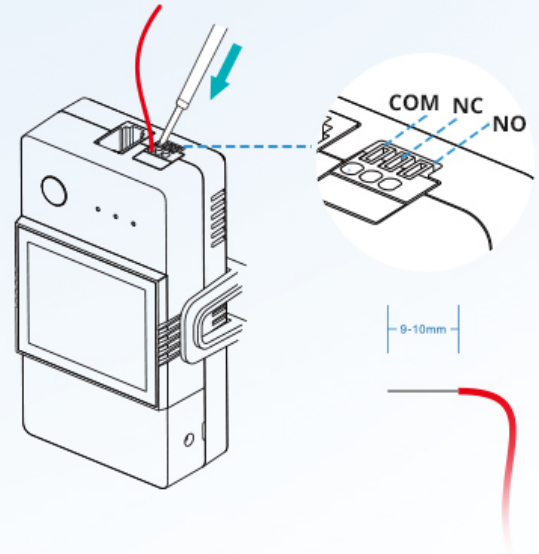
Switching Wi-Fi



1-channel Load



Dry Contact



Quick Start

TH uses faster Bluetooth Pairing, also it can be paired by scanning the QR code on the



Download eWeLink



Wiring and power on



Bluetooth pairing/
Scan QR code

Specifications



Model
THR316D
THR320D

Input/Output
THR316D: 100-240V ~50/60Hz 16A Max
THR320D: 100-240V ~50/60Hz 20A Max

Casing material
PC V0

Wi-Fi
IEEE 802.11 b/g/n 2.4GHz

Color
White

Dry contact
5-30V, 1A Max





Vaš izbrani izdelek.